



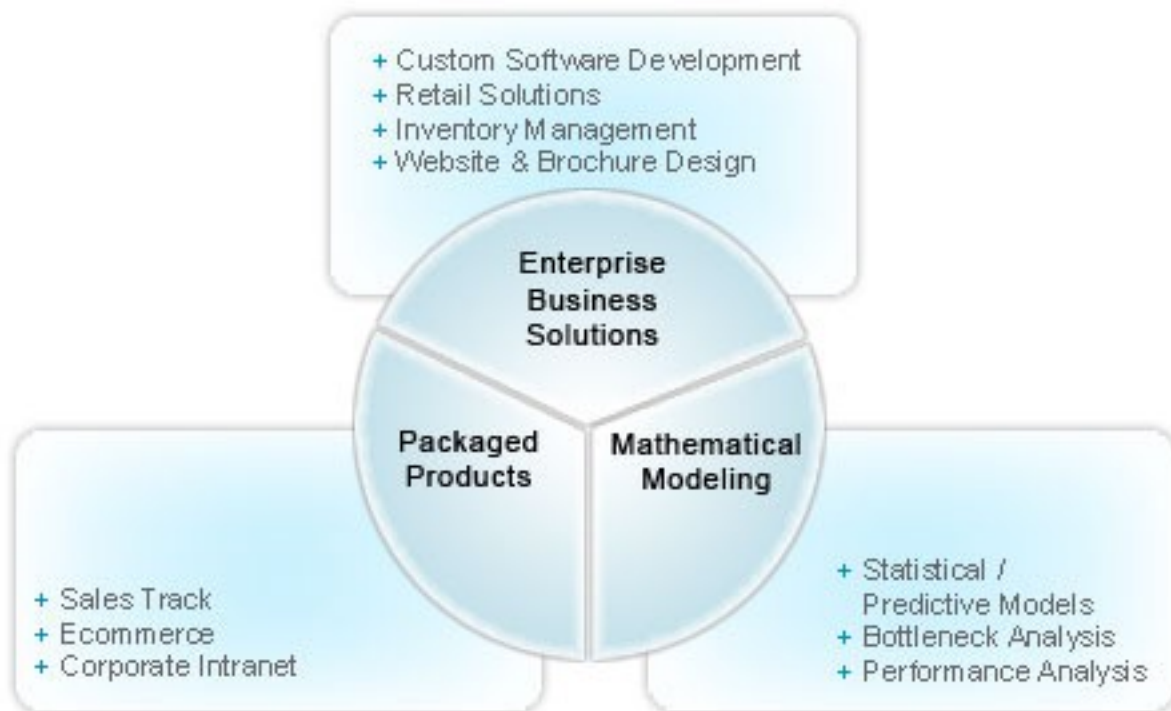
THOUGHTS... ACTION...
TOWARDS PERFECTION...



**Enterprise Business Solutions
Customized for your Business**

Most companies today have some level of IT automation to boost productivity. However, after initial productivity gains, growth seems to plateau. Companies continue to rely on manual processes to feed data, generate validation reports, manually validate inventory and build additional systems to make disparate systems work together. With expertise encompassing hardware and software, Bitscrape is uniquely poised to develop integrated systems for seamless data flow.

Bitscrape can help automate data collection and bridge remote devices, systems and locations !!



We **AUTOMATE** data acquisition and
CONNECT remote devices, systems
and locations



Enterprise Business Systems

Custom Software Development

We work closely with you to understand your requirements and design a solution tailored to meet your needs. Our solutions are scalable and our approach is modular. From small standalone sites to large scale applications, we have the architectural and technical skills to design a solution to fulfill your needs.

Retail Solutions

Our expertise in retail solutions spans design and deployment of Point of Sale (POS) devices and connecting to central office, Planning & Allocation, Supply Chain Management and Analytics & Reporting to capture existing sales variation by season, demographics, style and forecast sales plan for future. With expertise in the international retail arena, Bitscrape is uniquely poised to deliver state of the art retail systems for your company.

Inventory Management

Bitscrape provides information solutions for inventory control activities including Sales Forecasting, Sales and Operations Planning, Production Planning, Material Requirements Planning and Inventory Reduction.

Website & Brochure Design

We transform ideas and content into compelling websites and brochures to establish a professional presence for your company. Bitscrape also provides logo design, technical writing and flash content development services.

We understand the **RIGHT**
application of technology to
meet your business needs





Packaged Products

Designed to generate short term return on investments and achieve low total cost of ownership, Bitscrape provides a suite of packaged products. The packaged products come complete with hosting, maintenance and migration services from your existing systems making the transition seamless.

Packaged products for **FAST**
return on **YOUR** investments

Sales Track

Gain control over your sales lead management process with our sales track system with comprehensive case tracking, reports, dashboard and to do lists.

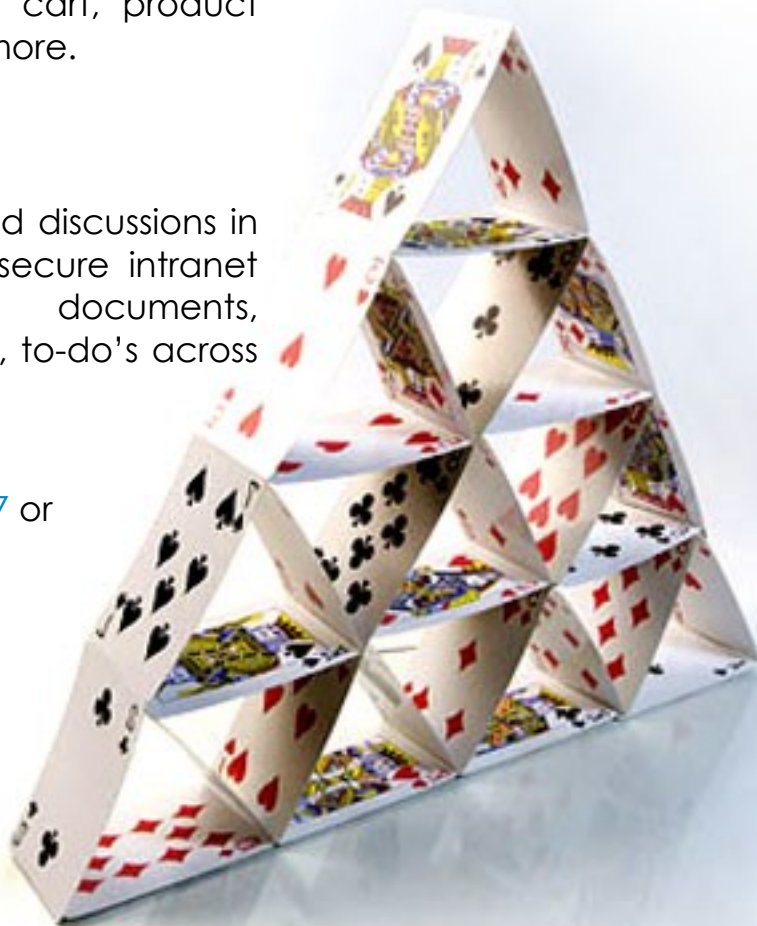
E-Commerce

Sell products online with our e-Commerce solution offering out of the box store front, product catalog, shopping cart, product rating, product review and more.

Corporate Intranet

No more lost documents and discussions in emails - Bitscrape provide secure intranet solution to share documents, announcements, discussions, to-do's across offices.

Call today @ [91-33-4006-1517](tel:91-33-4006-1517) or
email info@bitscrape.com
for a free demo!!

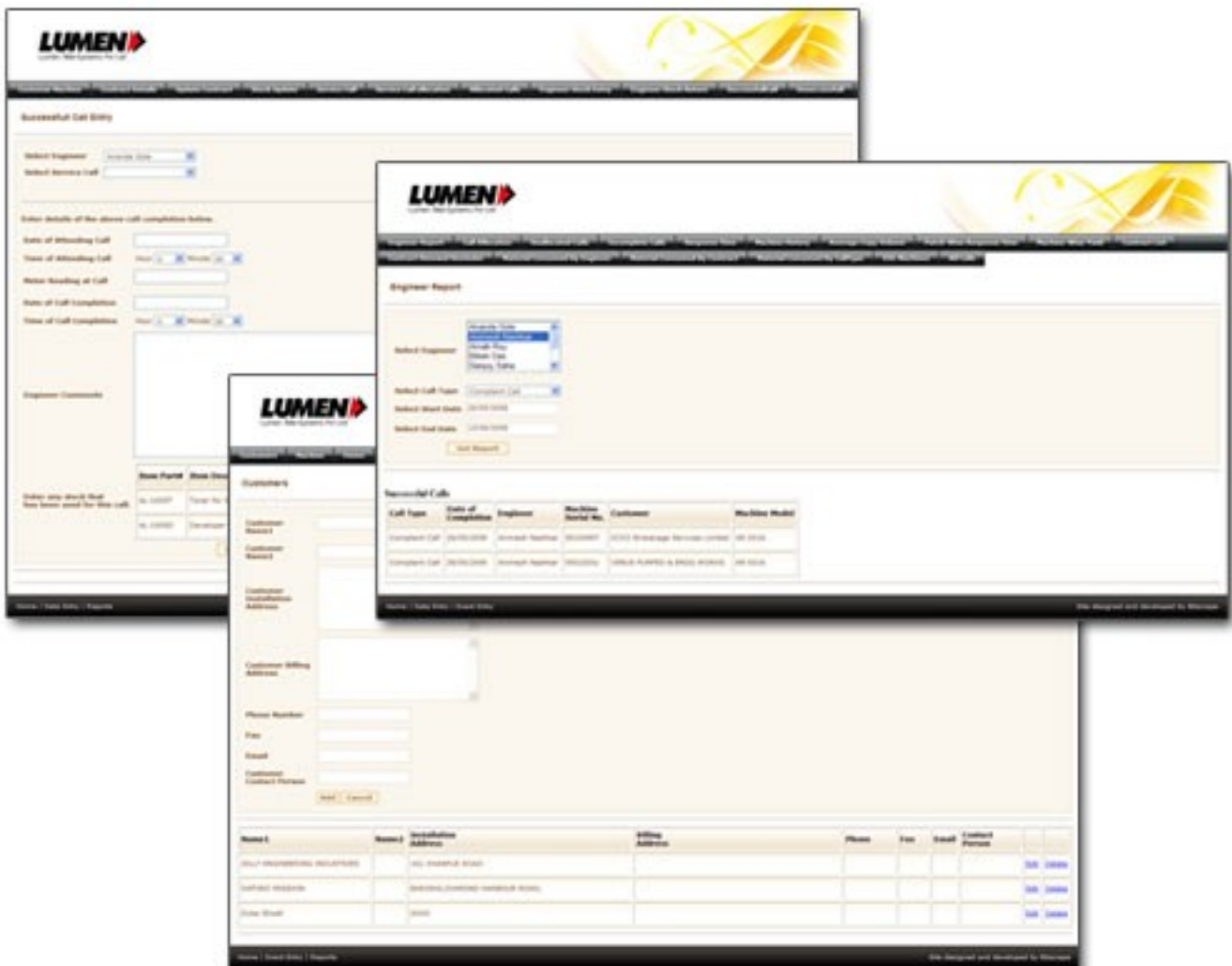


Project - Service Management & Scheduling System

Client - Lumen Inc.

Technologies - Microsoft .Net, Microsoft SQL Server

Lumen Tele-systems (P) Ltd is a leading distributor and service provider of office automation equipment, manufactured by one of the leading Japanese manufacturer. Bitscrape developed the Service Management System for Lumen as an Enterprise Business Solution for connecting service personnel with service requests from distributed customers and scheduling service assignments for geographically dispersed locations. The System logs a service request and allocates the same to service personnel for completion. Service requests are matched against service personnel. System also manages the scheduling of work for the personnel and maintains inventory of spares and other components at service personnel level. The system also generates meaningful MIS for monitoring service functions and evaluating performance.

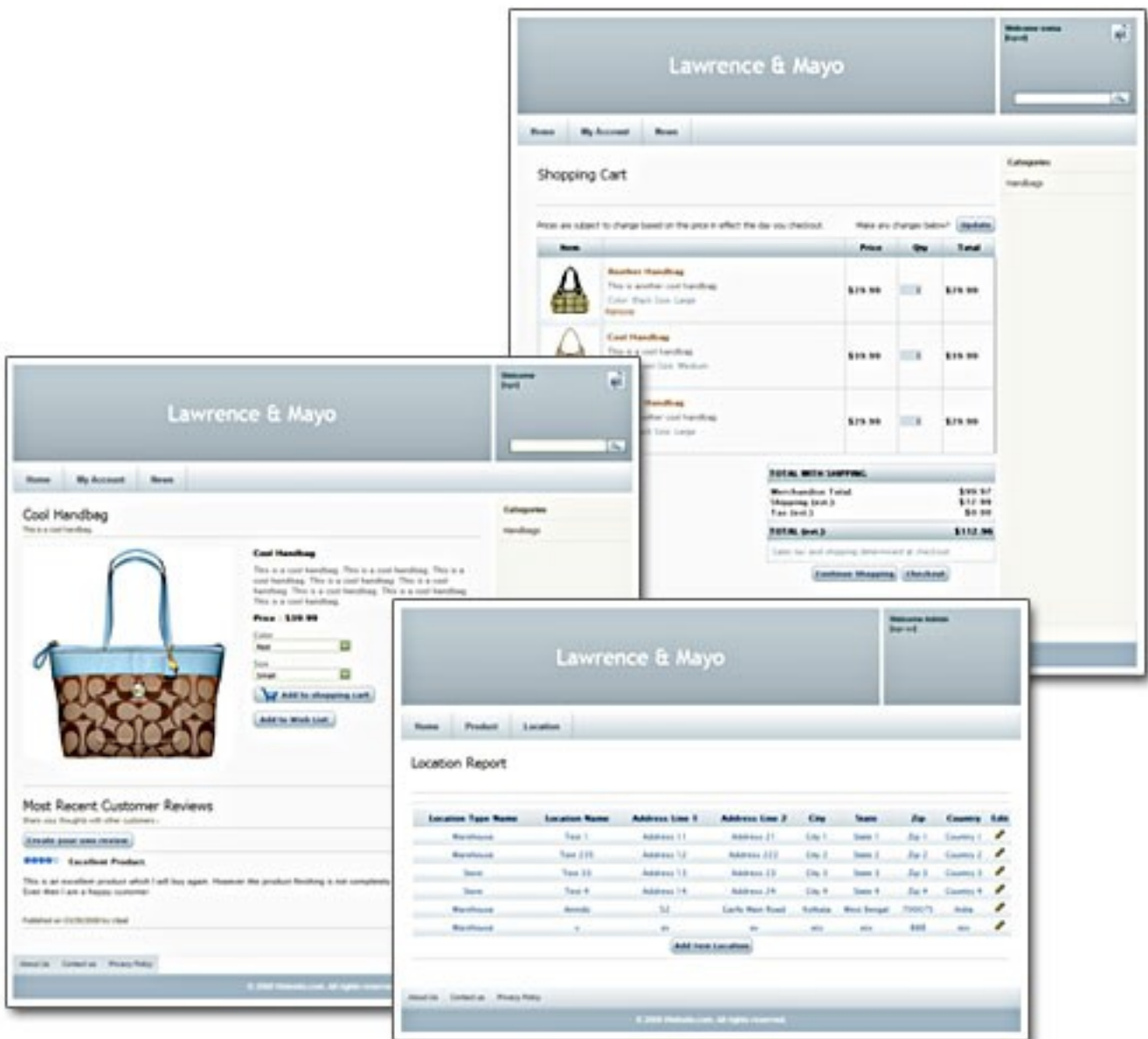


Project - Bcommerce

Client - Bitscrape (Internal Product)

Technologies - Microsoft .Net, Microsoft SQL Server

Bitscrape developed an in-house e-Commerce Site. The site is intended to provide faster turn around and time to market to clients requiring e-Commerce site. Site includes core features like Product Catalog, Product Categorization, Unlimited Category Nesting, Shopping Cart, Checkout and User Reviews and Comments. The e-Commerce site also provides admin screens for add/update/delete products and basic reporting functionality.

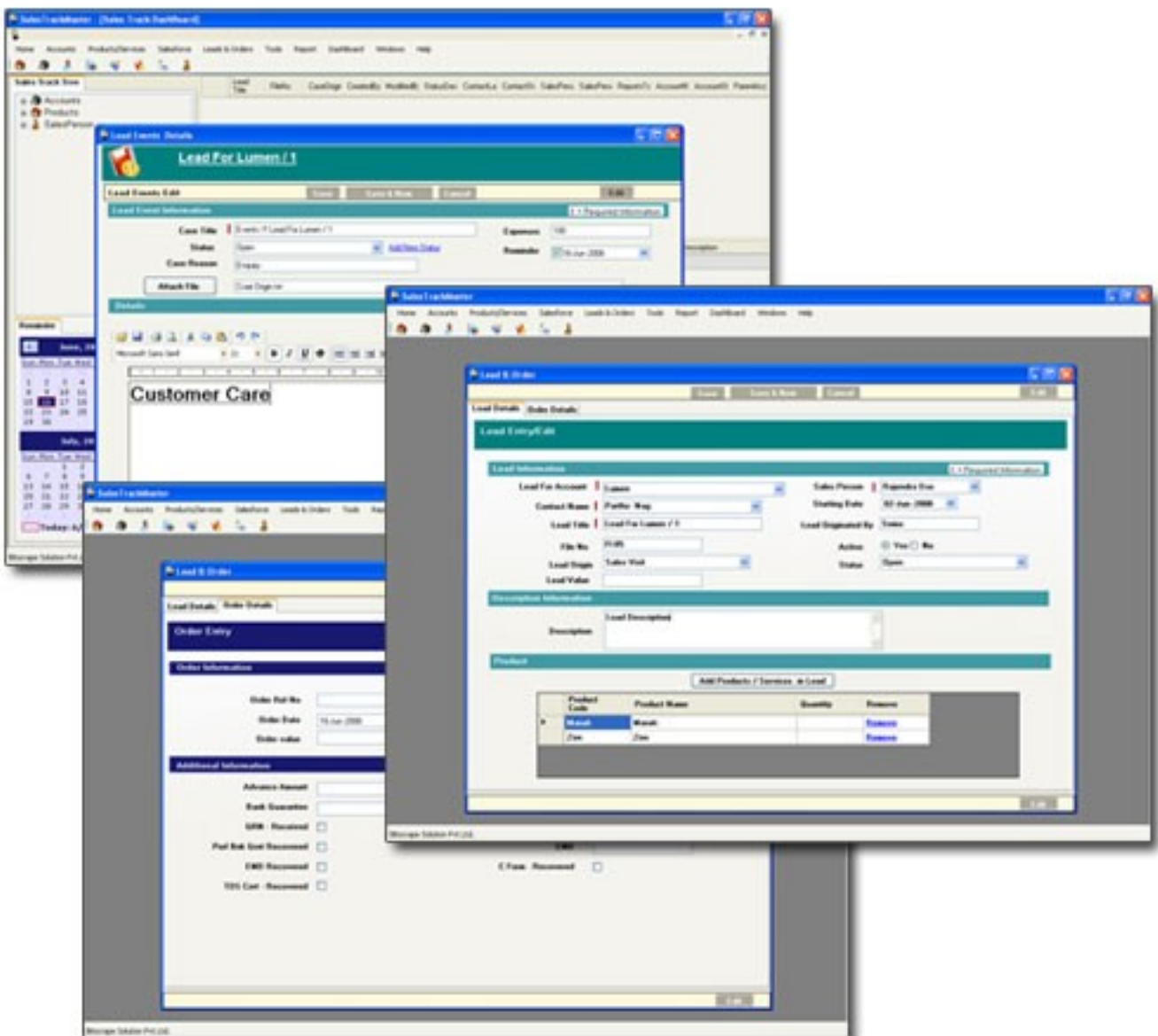


Project - Sales Track

Client - Bitscrape (Internal Product)

Technologies - Microsoft .Net, MS Access

Bitscrape developed an in-house client-server Sales Track product as an Enterprise Business Solution. The product is intended to provide basic Sales Track. The System supports Customer Management, Lead & Case Management, Contact Management, Order Management and other key features. Management reports are also included.



- Project** - Automatic Weather Station/ Remote Terminal Units
- Client** - The Royal Government of Bhutan
- Technologies** - Microsoft. Net, SQL

Bitscrape's sister concern, **Industrial Software & Systems** designed, developed and manufactured custom Automatic Weather Station (AWS) Remote Terminal Units (RTU) to meet the data acquisition requirements of The Royal Government of Bhutan . A typical AWS RTU is capable of reading signals from appropriate sensors for different weather parameters including temperature, relative humidity, solar radiation, evaporation, wind speed, rainfall, NO2 / CO2 levels.

The AWS RTU reads these data in configurable time intervals. The RTU has a user interface comprising of four lines of the alphanumeric characters and an eight key keyboard. All data readings are displayed along with the Real Time Clock Value. Apart from the regular display, a user can also check and configure scaling and effect values for individual data channels. The RTU has a slot in which an MMC/SD card can be inserted to store data permanently.

The Data acquired through AWS RTU is sent to a Central Server through PSTN/ GSM Network. The Royal Government of Bhutan has installed the AWS RTU at three strategic locations in Bhutan and plans to install another nine units in the near future.



Bitscrape Solutions Private Limited is a young and dynamic company established in 2007. Soon after its inception, Bitscrape entered into an alliance with Industrial Software & Systems (ISS) which has been providing Industrial Automation Services and Embedded Systems Solutions for over 10 years.

A young company only in age, Bitscrape has been formed by seasoned industry experts with rich professional experience, who have delivered large scale solutions. With cumulative industry experience spanning greater than 35 years, we bring to the table specialists who understand the business and the right application of technology solutions to increase profitability. Our experts have proven experience, both in India and USA, in delivering large scale solutions integrating multiple systems.

Bitscrape headquarters is located in the Salt Lake City, the IT hub of Kolkata, India. With state of the art infrastructure and facilities, we are poised to work with you to be your single source solution provider to meet all your technical requirements.



#311, SDF Building, 2nd Fl,
Block GP Sector V,
Salt Lake, Kolkata - 700
091,
West Bengal, India

Phone : 91-33-4006 1517
Telefax : 91-33-4006 5574

E-mail :
info@bitscrape.com ,
contact@bitscrape.com

Website :
www.bitscrape.com

